



Rexnord Introduces:

1200-series

Customer Service Training

April 2005

**The
Power of
Rexnord**



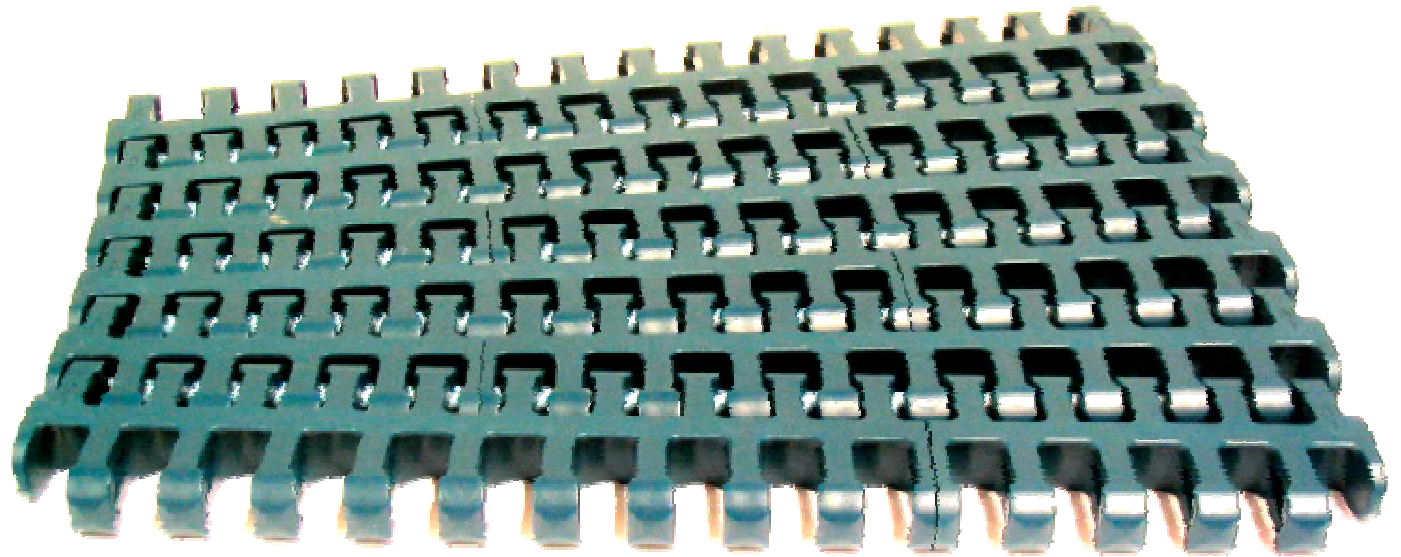
Content

- What is 1200-series?
- New outer radius module
- New inner radius module
- Coding system
- Special Sidel executions
- Questions

What is 1200-series?

- Generic name for 1.25-inch pitch sideflexing belts
 - Existing 1255-series
 - New 1265-series
 - New 1275-series
 - New 1285-series
- All use original 1255-series sprockets

1255-execution



The
Power of
Rexnord

Rexnord
|||||

1255-series

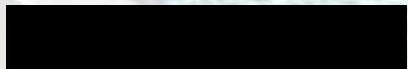
- Original 1.25-inch sideflexing belt with 3 guiding alternatives:
- RBP = Radius Belt with Positrack



- RBT = Radius Belt with Tabs



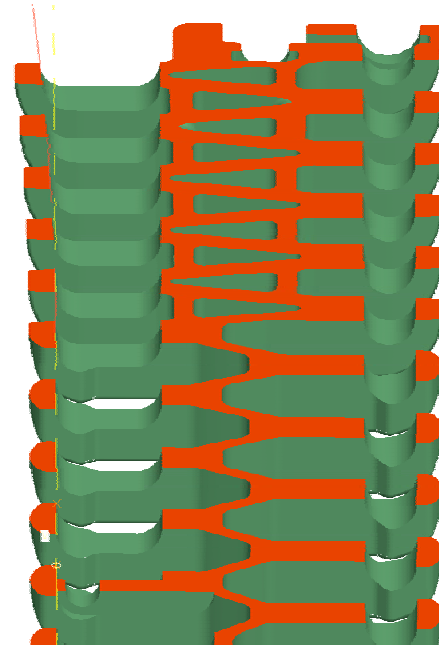
- RB = Radius Belt



Background

- New development based on 1255-series
- Co-operation with Sidel France
- Applications in packaging require:
 - Higher strength
 - Higher speed
- For heavy duty applications:
 - heavy packs
 - 180-degree curves
- Will be shown on Interpack 2005

1265-execution

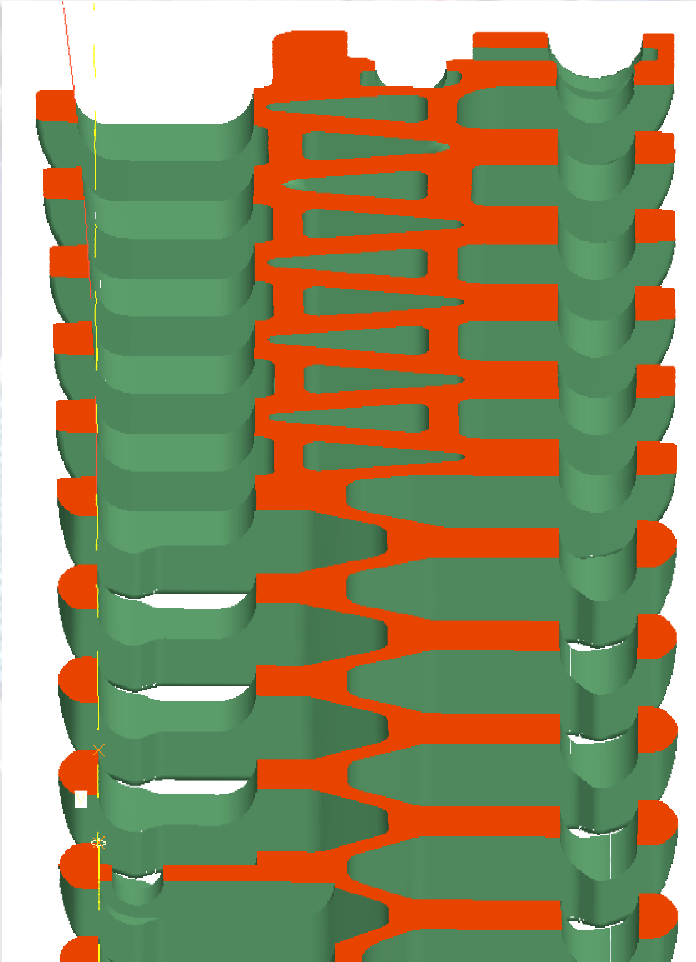


The
Power of
Rexnord

Reinforced end module "1265"



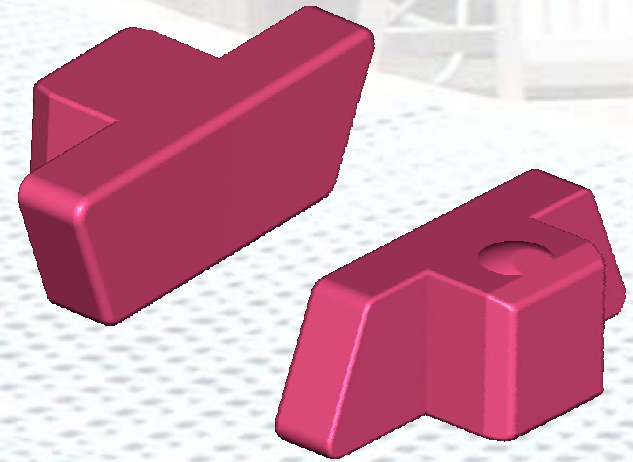
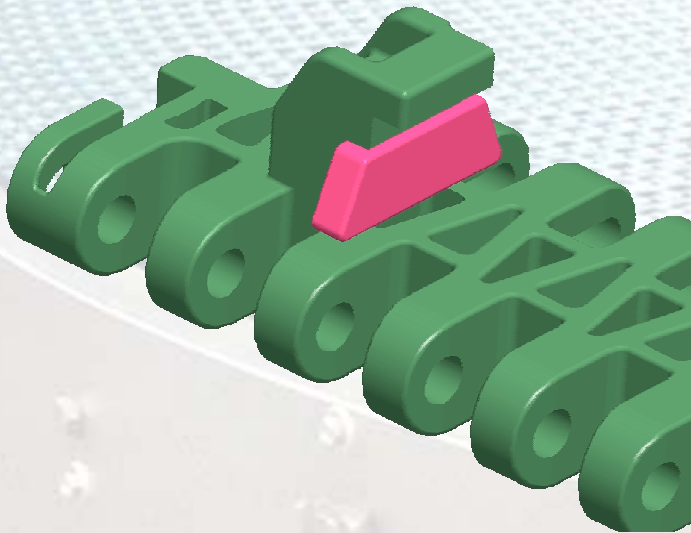
Higher strength



- Special shape hinge eyes
- Reinforced structure
- Running direction left or right (no S-curves)
- In XLG and WSA only!

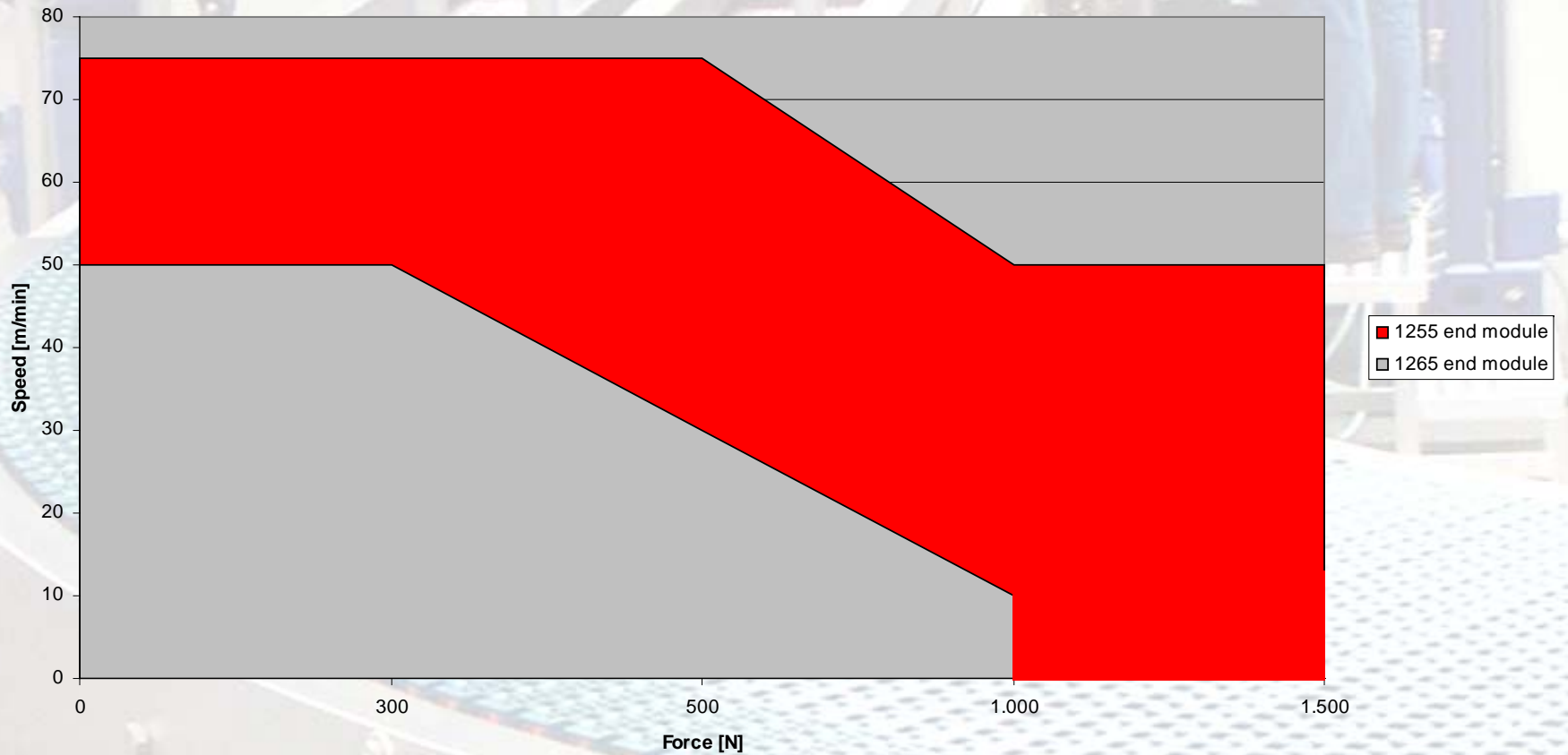
Higher speed

- Newly designed tab & sliding blocks
 - more materials possible
 - less friction
 - high speed
- New curve guiding profile (800.00.19)

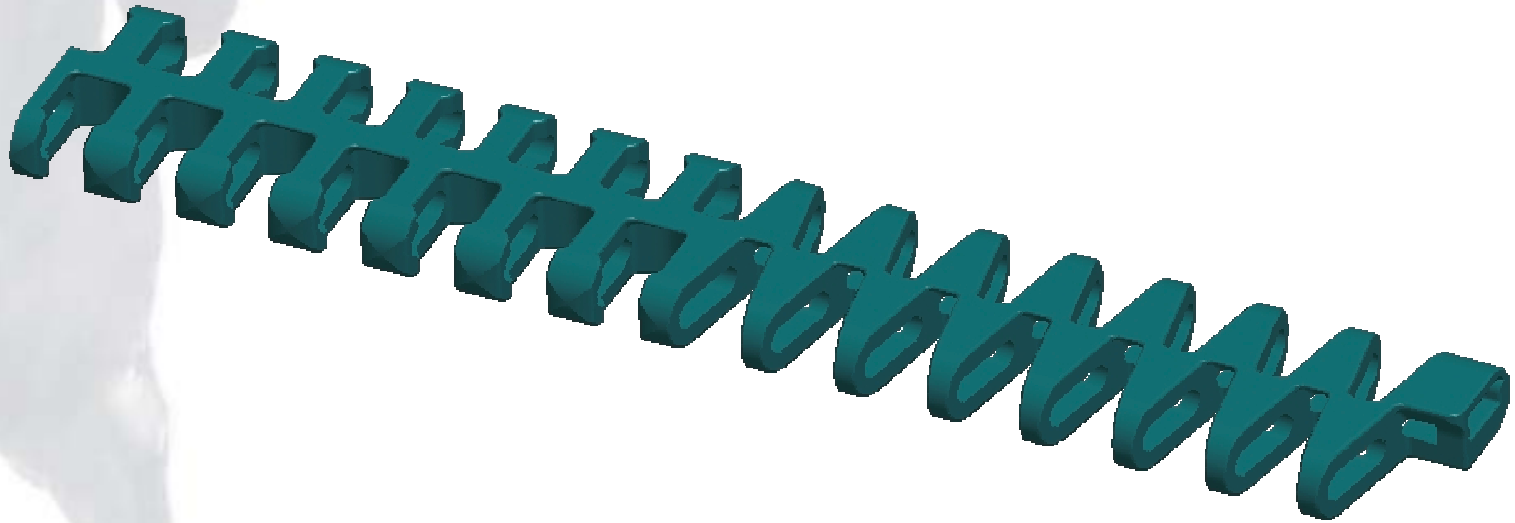


High Capacity!

PV-Limits Comparison 1255-1265



1275-execution



**The
Power of
Rexnord**

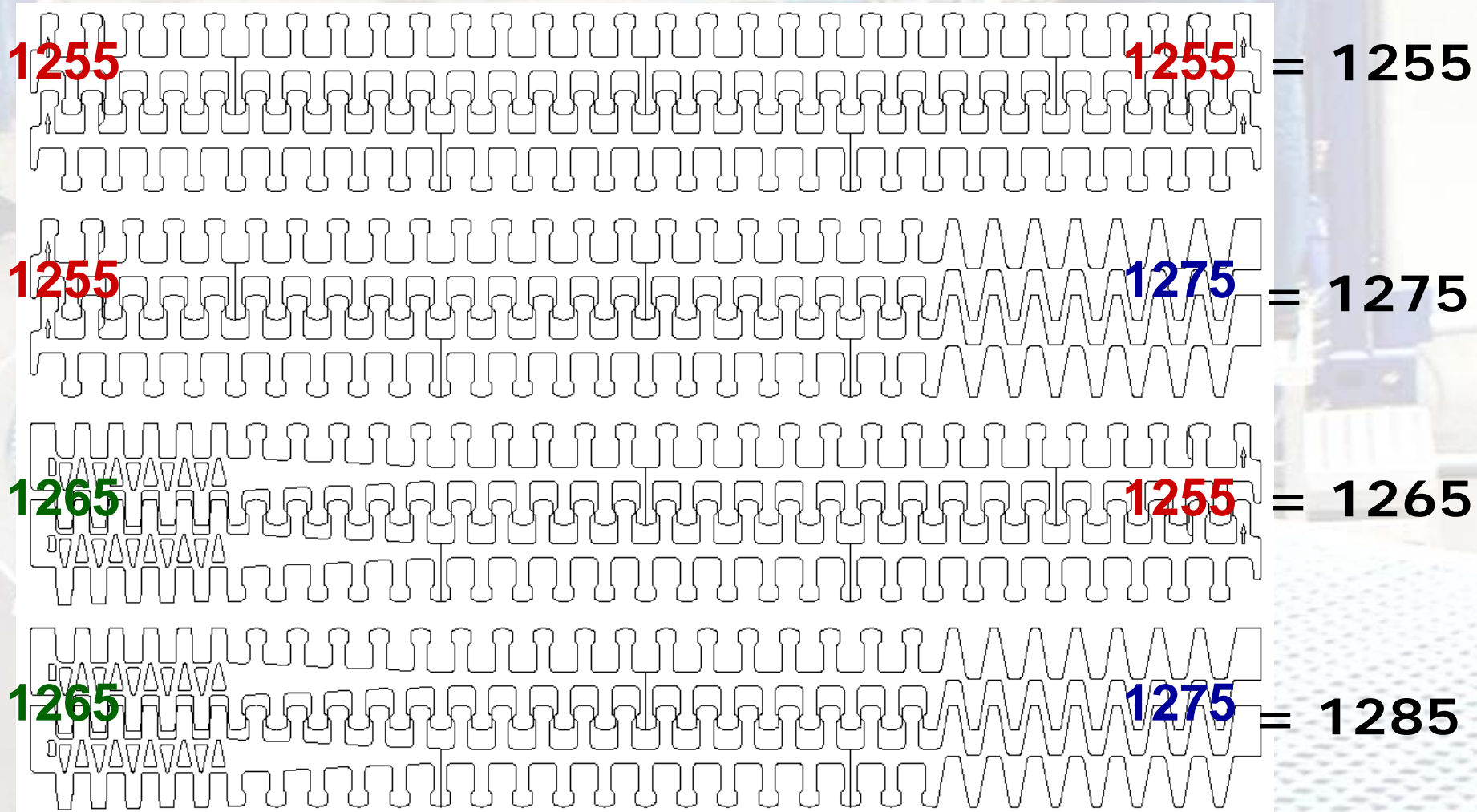
Tight turn radius "1275"



Tight Turn Radius 1275

- New development for 1200-series
- Combination with 1255 RBP
- Minimum radius 1275:
 - 1.2 x belt width for belt widths up to 595mm
 - 1.2 - 1.4 x belt width up to 1000mm
 - max 1.5 x belt width over 1000mm
- Turning direction left or right (no S-curves)
- In XLG and WSA only!

Possible combinations



Nomenclature

RBT 1265 RB XLG-B 425

- RBT = Outer module TAB
- 1265 = Reinforced outer & 1255 inner module
- RB= RB Type inner module
- XLG = material XLG acetal
- B = standard type sliding block (Brown)
- 425 = 425 mm wide

Nomenclature

RBP 1275 RB XLG 680

- RBP = Outer module RBP1255
- 1275 = 1255 RBP outer & 1275 inner module
- RB= RB Type inner module
- XLG = material XLG acetal
- 680 = 425 mm wide

Nomenclature

RBT 1285 RB XLG-B 510

- RBT = Outer module TAB
- 1285 = Reinforced end & 1275 inner module
- RB= RB Type inner module
- XLG = material XLG acetal
- B = standard type sliding block (Brown)
- 425 = 425 mm wide

Nomenclature

WSA-B 1265 RBT RB 425

- WSA = material (white acetal + microban)
- B = standard type sliding block (Brown)
- 1265 = Reinforced end & 1255 inner module
- RBT = Outer module TAB
- RB= RB Type inner module
- 425 = 425 mm wide

Nomenclature

WSA-B 1275 RBP RB 425

- WSA = material (white acetal + microban)
- B = standard type sliding block (Brown)
- 1275 = 1255 RBP outer & 1275 inner module
- RBP = Outer module RBP
- RB= RB Type inner module
- 425 = 425 mm wide

Additional information

- Pre-Introduction at Interpack
- Full Introduction at Interbrau
- Standard codes in BaaN for standard widths
 - sales text & pricing defined
 - offers can be made starting from April 25
- Configurator for complete series being prepared (like for 1255)
- Sidel executions have different sliding blocks
 - These will be blocked for other customers

Additional information

- New executions **not** available with flight or SuperGrip
- All applications need to be checked (calculated) by TS-department before accepting order!



**Thank you for your
attention....**

**any Questions
left?Please contact
Technical Support**